

Luis Salinas-Madrigal

- **Born in Mexico City, 1938**
- **MD National Autonomous University of México, 1964**
- **Fellow, Conrad Pirani Michael Reese Hospital, Chicago 1967-1968**
- **Fellow, Benjamin H. Landing, Children's Hospital of Los Angeles, UCLA**

Luis Salinas-Madrigal

- **Director of Pathology Children's Hospital of IMAN (National Institute of Pediatrics) México City, 1970-1973**
- **Professor and Chairman, Department of Pathology, National Institute of Cardiology, México City, 1974-1983**
- **Director of Anatomic Pathology, Cardinal Glennon Children's Hospital, St. Louis, 1984-1997**
- **Director, Nephropathology Division, Saint Louis University, St. Louis, 1985-present**

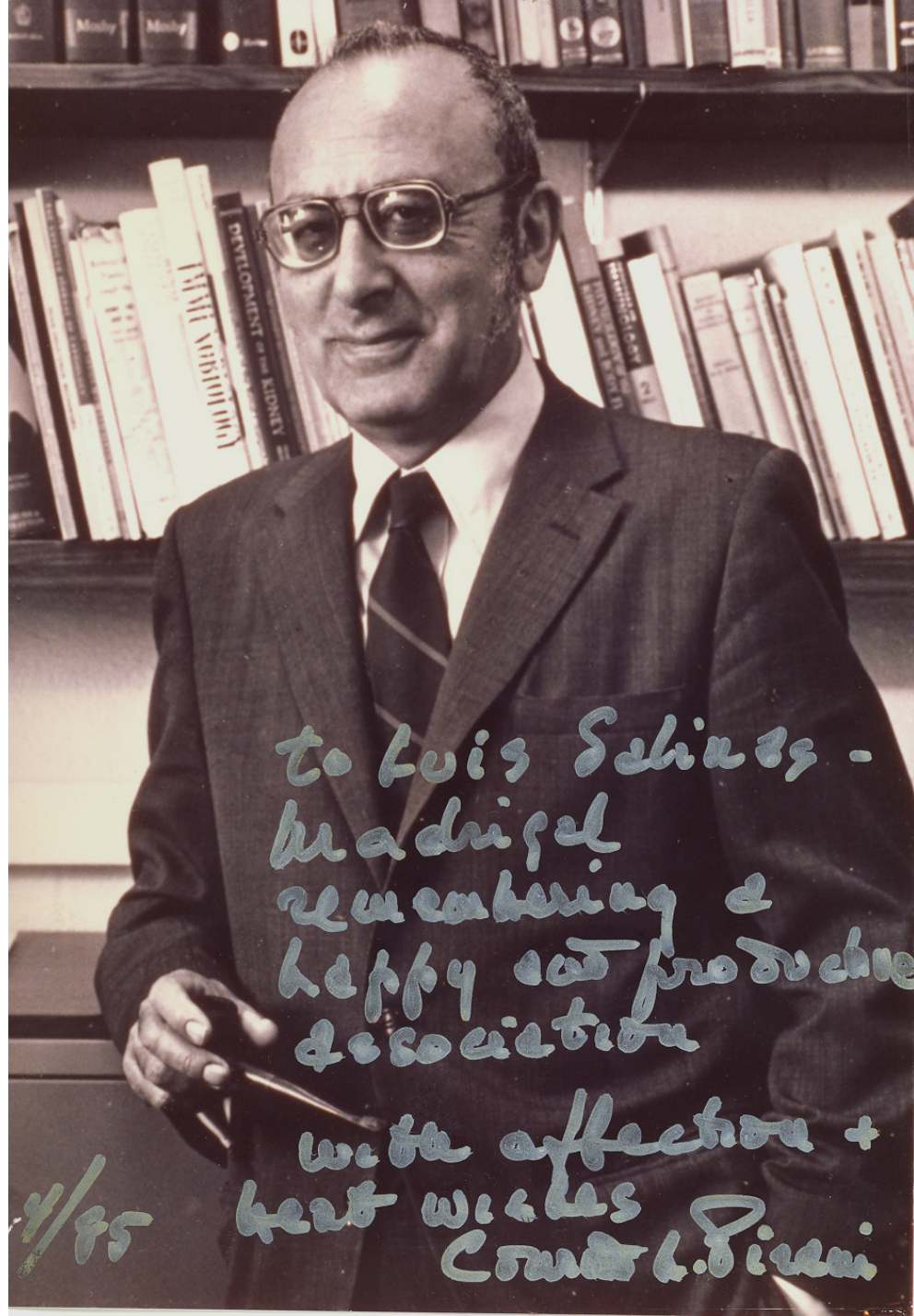
Luis Salinas-Madrigal

- Pirani CL, Salinas-Madrigal L:
Evaluation of percutaneous renal biopsy.
Kidney Pathology Annual 1966-1975.
Appleton Century, New York, 1975
- Salinas-Madrigal L, Pirani C, Pollak VE:
Glomerular and vascular **insudative**
lesions **in diabetic nephropathy: electron**
microscopy studies. Am J Pathol, 59:369,
1970



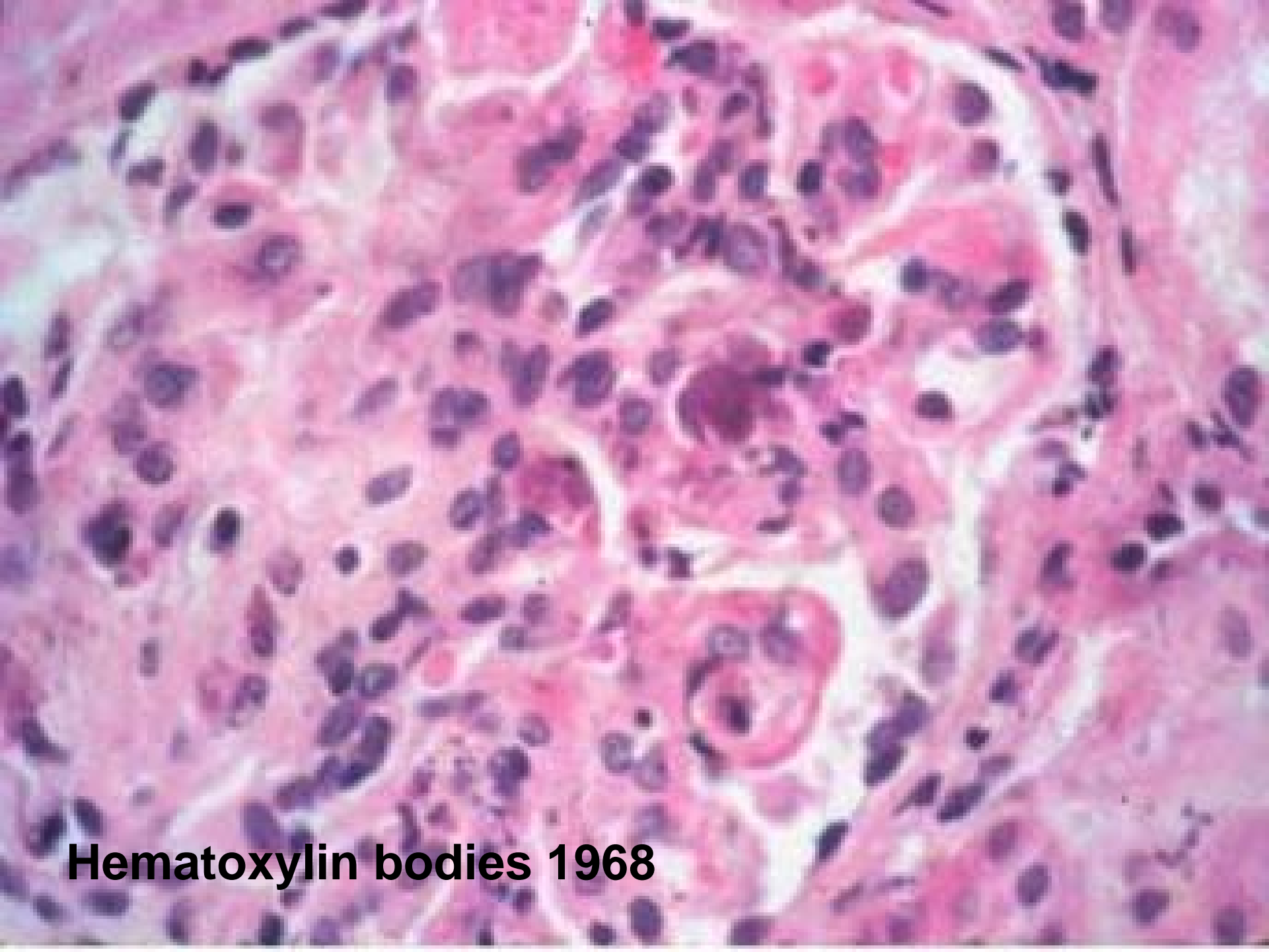
NEPHROLOGY "TEAM"
MICHAEL REESE HOSPITAL
CHICAGO, ILL., 1968

1985





SLU year end photo 1988



Hematoxylin bodies 1968

Luis Salinas-Madrigal

- **Luis trained a >dozen renal pathologists in Mexico & the US including RPS members**
 - **Roberto Garola**
 - **Eugene Taboda**
 - **Helen Liapis**
 - **Guillermo Ramon Garcia**
 - **Cherise Cortese**

Luis Salinas-Madriral

- **Visiting professor in >20 international universities, including US, South America, Spain, Iran, Singapore and India**
- **Member of the Panel of the Banff Classification of Allograft Pathology 1997-current**
- **Author >75 scientific papers and >12 books**
- **chapters**
- **Still active in international nephrology/renal pathology events**
- **Member of the RPS international committee**



X CONGRESO ARGENTINO DE NEFROLOGIA
III CONGRESO ARGENTINO DE NEFROLOGIA
Y ENFERMEROS DE NEFROLOGIA





X CONGRESO ARGENTINO DE NEFROLOGIA
III CONGRESO ARGENTINO DE NEFROLOGIA
Y ENFERMEROS DE NEFROLOGIA



Barcelona 1998



IRAN 2008



Athens, Greece, while visiting in 1987, at the Kesariani monastery on a hill near Athens



BANFF

10 13 '94



?
 Juhani Rapola
 L. Salinas
 Robert Heptinstall
 Milana G. Artandilov
 Popovic
 A. Asschar
 Raja Sinniah
 R.A. Risdon
 Jay Bernstein
 Ira Greifer
 Louis Woolf
 Jack Chung
 Steen Olsen

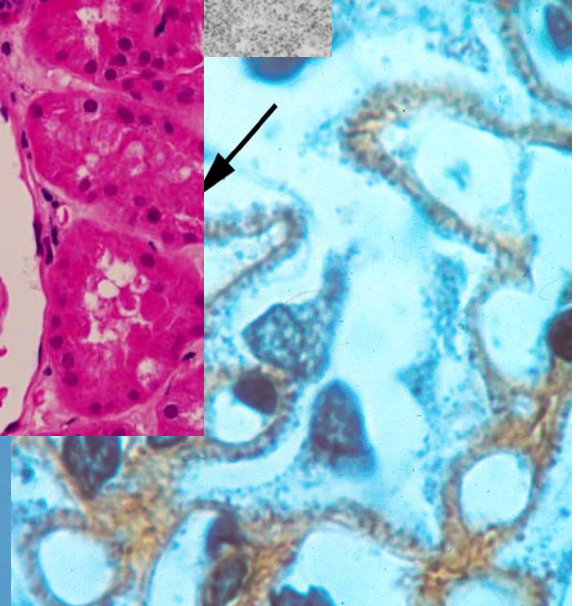
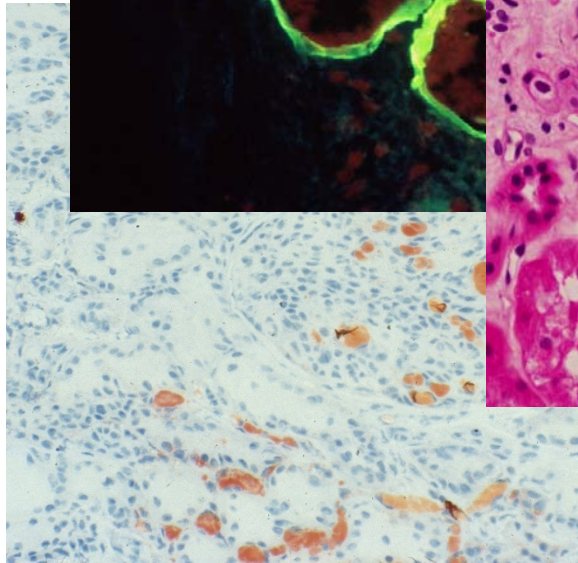
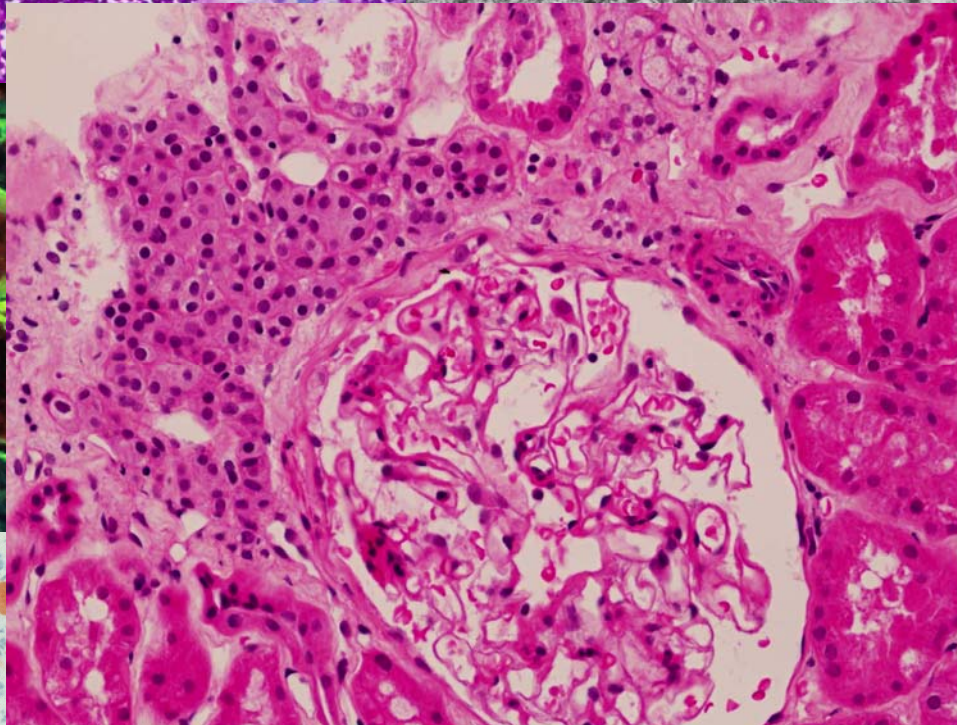
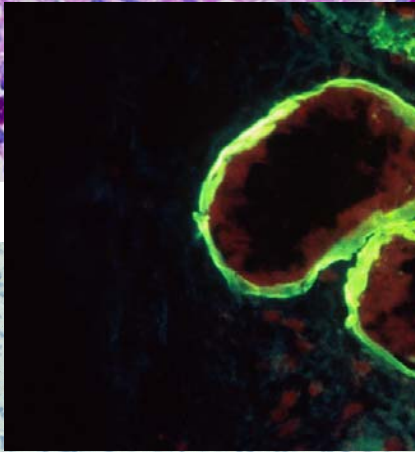
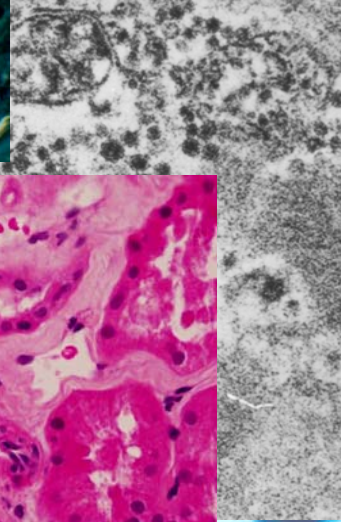
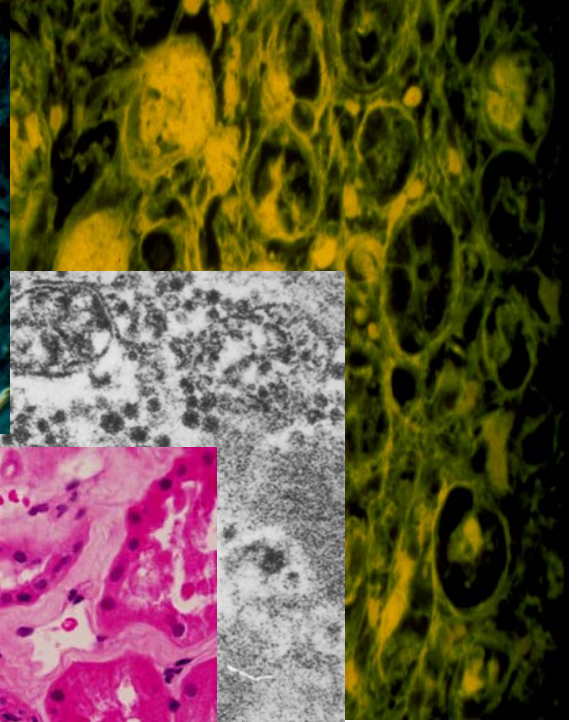
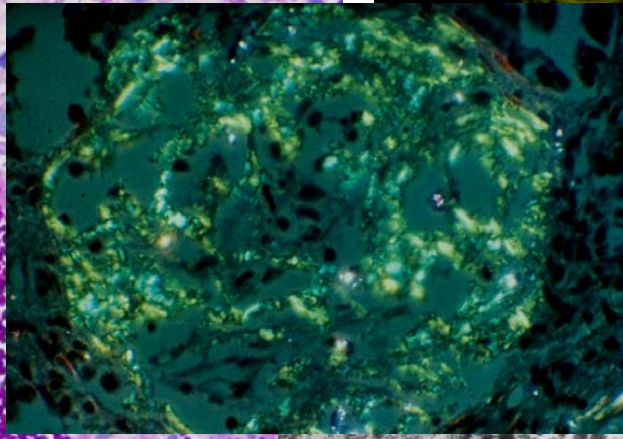
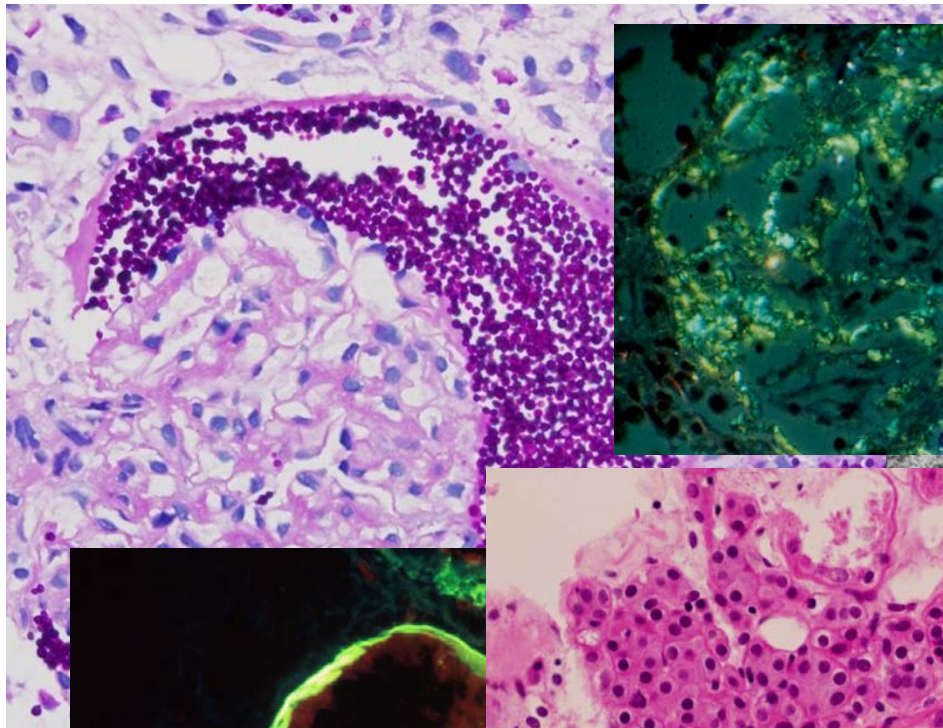


St. Louis University commencement



12 26 '96





CURRENT PRACTICE IN PEDIATRIC PATHOLOGY

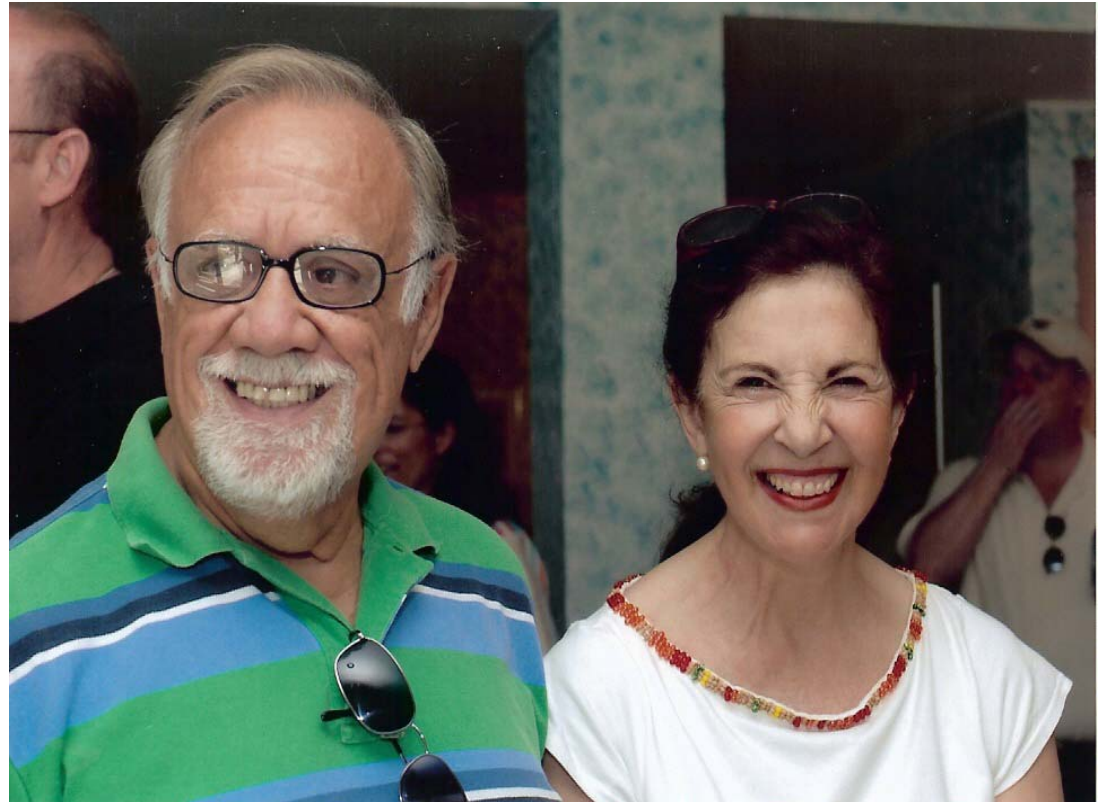
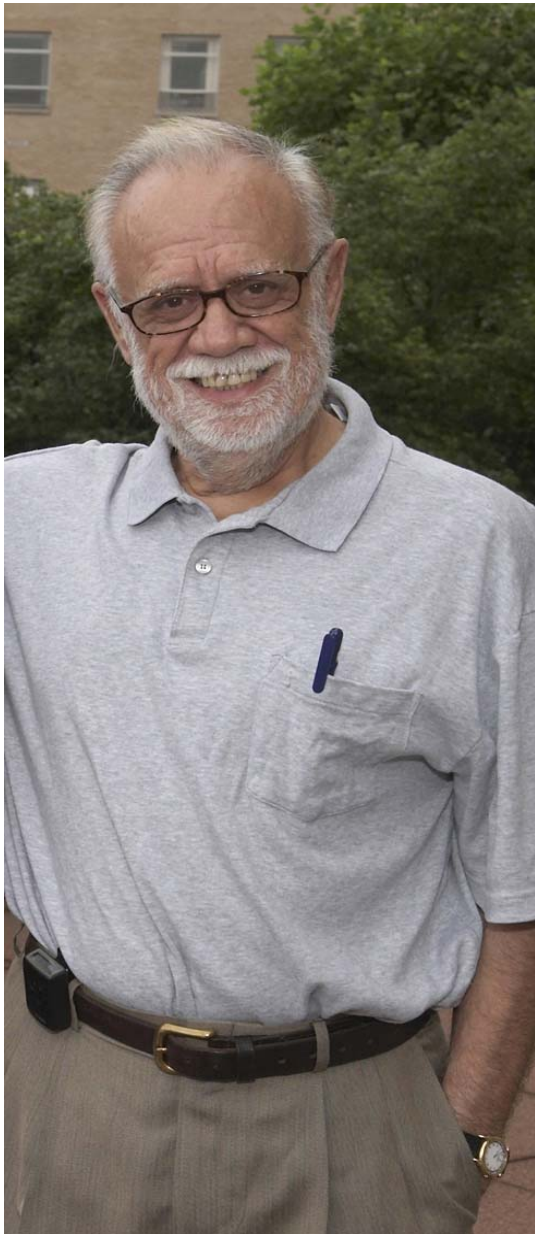
Molecular Pathology of Nephrotic Syndrome in Childhood: A Contemporary Approach to Diagnosis

HELEN LIAPIS*

Washington University School of Medicine, Department of Pathology & Immunology, St Louis, MO 63110, USA

Received November 15, 2007; accepted May 7, 2008; published online May 7, 2008.

This review is dedicated to Dr Luis Salinas-Madrigal, professor of pathology at Saint Louis University, for introducing me to the wonderful world of renal pathology and the diseases of childhood.



Year end party SLU 2007